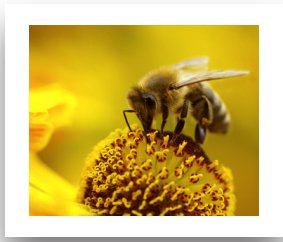


PROTECT POLLINATORS!



BEES AND OTHER BENEFICIAL POLLINATORS are disappearing at alarming rates. Although scientific research shows that the continued use of systemic pesticides is a leading contributor to pollinator decline, bees are also suffering from a lack of forage area and habitat. By making simple choices such as choosing to plant pollinator-friendly plants, we can all help in addressing this crisis.

*Planting seasons are listed based on approximate times of bloom; some flowers may have times of bloom beyond these seasons.

SPRING AND EARLY SUMMER	MID-SUMMER	LATE SUMMER AND FALL
American Plum	Black-Eyed Susan	Aromatic Aster
American Vetch	Black Samson	California Fuschia
Blanket Flower	Blue Vervain	Compass Plant
California Dutchman's Pipe	Butterfly Milkweed	Cudweed Sagewort
California Poppy	Candle Anemone	Deer Vetch
Chokecherry	Canadian Milkvetch	Four O'Clock
Clasping Coneflower	Canada Tick-Trefoil	Golden Alexander
Daisy Fleabane	Common Evening-Primrose	Heath Aster
Foxglove Bearded Tongue	Common Milkweed	Jerusalem Artichoke
Golden Currant	Eastern Mohave Buckwheat	Late Goldenrod
Large Penstemon	False Sunflower	New England Aster
Lyrate Rockcress	Fireweed	Pine Deer Vetch
Ohio Spiderwort	Grayhead Coneflower	Pitcher Sage
Prairie Rose	Great Blue Lobelia	Plains Sunflower
Prickly Wild Rose	Hoary Vervain	Prairie Sage
Red Flowering Currant	Illinois Bundleflower	Roundhead Lespedeza
Rosemary	Lanceleaf Coreopsis	Stiff Goldenrod
Sandcherry	Lemon Mint	Sawtooth Sunflower
Scarlet Gaura	Linden Tree	
Scarlet Globemallow	Pale Purple Coneflower	
Shell-Leaf Penstemon	Plains Coreopsis	
Skunkbush Sumac	Prairie Cinquefoil	
Western Yarrow	Prairie Gentian	
	Purple Prairie Clover	
	Rattlesnake Master	
	Rocky Mountain Bee Plant	
	Scarlet Monkey Flower	
	Showy Milkweed	
	Sensitive Briar	
	Showy Partridge-Pea	
	Stiff Sunflower	
	Upright Prairie Coneflower	
	Virginia Mountain Mint	
	Western Ironweed	
	Western Sunflower	
	Wholeleaf Rosinweed	
	Wild Bergamot	

For more information visit
www.centerforfoodsafety.org



A Project Of:
 Beyond Pesticides &
 Center for Food Safety